

## 1. Dimensions and weight of biofires

Table no 1, Drawing no 1.

## 2. General information

For problem-free fireplace operation and long usage, please take note of the information below. Fireplaces may only be exchanged or returned if unused and in their original packaging.

### Setting and Safety

As with any product which is used for burning, a bio-fireplace produces heat. Therefore, it should be located in a suitable place far away from inflammable materials. It should be situated at least 40 cm away from any furniture. Children and pets should stay a safe distance away from fire. Wall assembly is possible on condition that fire regulations, applicable in this place, are respected. It is recommended that fire-resistant coat be used on a wall within the range of fireplace assembly works in order to avoid scorching of the wall. Bio-fireplace uses oxygen, therefore it is necessary to ventilate the room.

### Starting the fire

These fires are only suitable to burn bioethanol (we recommended bio-deco). Using other materials or substances may lead to the damage, fire, severe injury or health damage. Combustible inserts should be filled maximally up to three quarters of height. The fire should only be started by a competent adult, respecting all safety regulations. Fuel should be fired only in designated containers by long fireplace matches or lighters for gas burners.

**IMPORTANT** - you should avoid filling and lighting the fire appliance while it is hot (for example, immediately after the automatic termination of the fire or after the fire has gone out). Fuel poured into a hot fire/container evaporates very quickly creating strong vapours, these may ignite and flash causing an explosion and burning.

### Extinguishing the fire

To extinguish the fire/biofuel, cut off the air supply. To extinguish the flame in the rectangular container, you should close it by moving built-in cover.

The container with the burning biofuel will be hot, so for closing a rectangular container always use the included poker.

Be careful, the bio- fire, and the immediate surroundings may stay hot for some time after use.

## 3. ASSEMBLY INSTRUCTIONS

After installing/setting bio-fireplace in place, it should be placed there container for biofuel.

### a) ALPHA, BRAVO, BRAVO 2, CHARLIE, CHARLIE 2, JULIET, JULIET 1100, JULIET 1500, OSCAR

Above biofire models are designed for mounting on the flat wall (mounting kit included) or built in the indicated hole on the wall. Installation involves putting the bio-fire in a prepared hole, which is cut in the wall or made in construction slabs (eg G-K fireproof panels). Use the mounting screws (set included) to assembly biofire. Dimensions of the hole adapted for bio-fire presented in Table no 2. Setting the bio-fire is presented in drawing no 2.

### b) DELTA, DELTA 2, DELTA 3, GOLF, MILA, QUAT

Above biofire models are designed for mounting on the flat wall (mounting kit included) or built in the indicated hole on the wall. Installation involves putting the bio-fire in a prepared hole, which is cut in the wall or made in construction slabs (e.g. G-K fireproof panels). Use the mounting screws (set included) to assembly biofire. Dimensions of the hole adapted for bio-fire presented in Table no 3. Setting the bio-fire is presented in drawing no 3.

c) MISA, INDIA, FOXTROT, KILO, HOTEL KRZAK, NOVEMBER, ROMEO, PLANET, LEGIONIS, DECEMBER, QUAERERE, EGZUL, JANUARY, FEBRUARY, OCTOBER, SIERRA, JULY, MARCH, APRIL, MAY, JUNE, AUGUST, ECHO biofire are freestanding units-do not require assembly.

#### d) LINATE

Installation of bio-fireplace Linate, perform the following steps according drawing No. 4.

#### e) HOTEL, HOTEL MINI, GALINA

Installation, perform the following order of Figure No. 5.

#### f) The large semicircular biofire - hanging model, PAPA, LIMA, QUEBEC, BALL, DELTA FLAT

This biofire model is intended to be set on a flat surface at the wall or to hang on the wall.

Wall installation, perform the following points:

- On the back of the fireplace, there are four openings in the leveled intervals which are used for wall mounting. Mark on the wall all the points of installation.
- Drill holes of 6mm diameter (in earlier indicated places on the wall).
- Place the studs supplied in the set together with the fireplace into the drilled holes.
- Screw in the bolts into the studs so that the space between them was approximately 3mm.
- Hang the bio-fireplace on the bolts, interleaving bolt heads through the big opening of key holes and lower the bio-fireplace slowly, so that the bolts find themselves in oblong openings and are grounded on their endings.
- The last step is to check if the bio-fireplace hangs on the wall without 'slack'.

After installing/setting bio-fireplace in required place, biofuel container should be fitted into it.

#### 4. Warranty

The manufacturer gives a 2-year guarantee for the proper usage of bio-fire from the purchase date.

The buyer is obliged to read the user manual and follow the instructions.

In case of a complaint, it must be submitted by way of the complaint protocol and invoice.

The submission of this documentation is necessary to consider all claims.

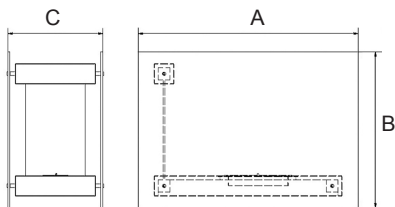
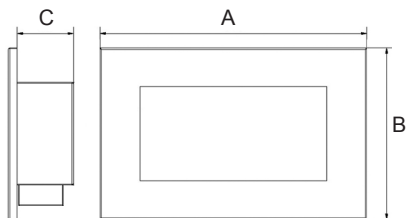
Consideration of the complaint will be made up to 14 working days of the date of its submission.

**Note: Searing the bio-fireplace should not be left without adult supervision.**

**Uwaga:** Palącego się biokominka nie należy pozostawiać bez nadzoru osoby dorosłej.

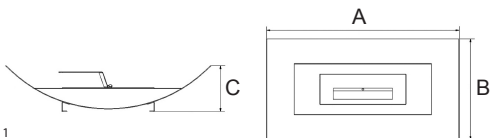
Biofireplaces: Alpha, Bravo, Bravo 2, Charlie, Charlie2, Delta, Delta 2, Golf, Quat can be fitted with the glass, which is mounted on the front of biofireplace.

**Uwaga:** With biofireplaces equipped with glass there is a risk of burn because the glass heats up. Therefore, care should be taken in their use.



LINATE, HOTEL, HOTEL MINI, FOXTROT, HOTEL KRZAK, HOTEL MINIKRZAK, GALINA

PL Rys. 1  
 EN Drawing 1  
 DE Abb. 1  
 RU Рис. 1  
 CZ Výkr. č. 1  
 SK Nákr. č. 1  
 IT Disegno .numero 1  
 GR Πίνακας 1  
 FR Dessin 1  
 SI Slika 1  
 LT 1 schema  
 ES Figura 1  
 HU Rajz 1



MISA, MISA MINI, INDIA, INDIA MINI, INDIA MAX, KILO, ECHO

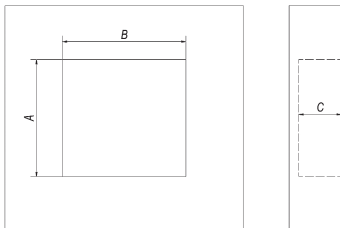
	A (mm)	B (mm)	C (mm)	(kg)
April	1150	938	325	68
Alpha	800	590	174	17
August	1150	979	295	67
Bravo	900	652	174	23,5
Bravo 2	902	650	174	23
Ball	848,5	850	181,5	28,5
Charlie	880	510	174	20
Charlie 2	460	780	174	14,5
December	1150	1071	310	64
Delta	600	400	142	6,8
Delta 2	900	400	142	8,4
Delta 3	1200	400	162	13,5
Egzul	1130	973	315	68,5
Echo	500	162	290,6	7,8
Planet	1180	975	331	81
February	1120	962	295	54
Foxtrot	360	702	290	15
Delta Flat	900	400	120	13,2
Golf	648	374	144	4,4
Galina	310	218	142	4
Hotel	700	400	334	15,5
Hotel MINI	390	250	234	6
Hotel Krzak	808	600	488	12
Hotel Mini Krzak	564	488	372	6
India	490	215	85	4
India MINI	340	155	70	2
India MAX	670	247	100	7
January	1067	1066	252	52
July	1025	969	275	55
Juliet	1800	650	142	38
Juliet 1500	1500	650	142	27
Juliet 1100	1100	650	142	21
June	750	679	250	31
Kilo	590	350	85	7
Legionis	1215	1152	342	85
Linate	1100	780	474	61
Lima	1000	700	197	22,6
March	1000	857	250	49
May	1115	880	315	54
Mila	1409	764	222	23
Misa	717	400	171	8,5
Misa MINI	470	260	130	4
Papa	650	900	143	12
Półokragły	779	551	260	21
Romeo	359	1135,5	209	19
Sierra	408	1700	405	48,5
November	1150	1013	295	52
October	1150	959	330	56
Oscar	900	630	190,5	19
Quaerere	1212	983	332	63,5
Quat	685	534	185	11
Quebec	1150	398	295	45

PL Tabela 1  
 EN Table 1  
 DE Tabelle 1  
 RU Таблица 1  
 CZ Tabulka č. 1  
 SK Tabuľka č. 1  
 IT Tabella .numero 1  
 GR Πίνακας 1  
 FR Table 1  
 SI Tabela 1  
 LT 1 lentelė 1  
 ES Tabla 1  
 HU Táblázat 1

PL Tabela 2  
 EN Table 2  
 DE Tabelle 2  
 RU Таблица 2  
 CZ Tabuľka č. 2  
 SK Tabuľka č. 2  
 IT Tabella .numero 2  
 GR Πίνακας 2  
 FR Table 2  
 SI Tabela 2  
 LT 1 lentelė 2  
 ES Tabla 2  
 HU Táblázat 2

	A	B	C
Alpha	530	535	180
Bravo	620	834	180
Bravo 2	620	834	180
Charlie	460	740	180
Charlie 2	673	380	180
Juliet	473	1620	142,5

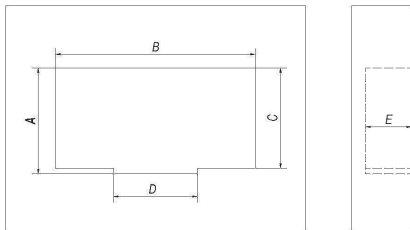
PL Rys. 2  
 EN Drawing 2  
 DE Abb. 2  
 RU Рис. 2  
 CZ Výkr. č. 2  
 SK Nákr. č. 2  
 IT Disegno .numero 2  
 GR Πίνακας 2  
 FR Dessin 2  
 SI Slika 2  
 LT 2 schema  
 ES Figura 2  
 HU Rajz 2



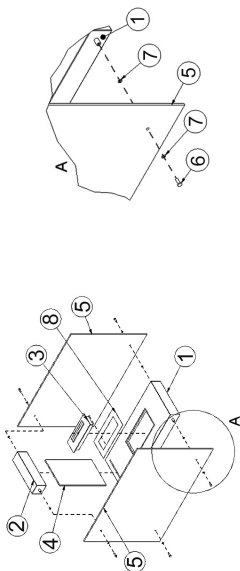
PL Tabela 3  
 EN Table 3  
 DE Tabelle 3  
 RU Таблица 3  
 CZ Tabuľka č. 3  
 SK Tabuľka č. 3  
 IT Tabella .numero 3  
 GR Πίνακας 3  
 FR Table 3  
 SI Tabela 3  
 LT 1 lentelė 3  
 ES Tabla 3  
 HU Táblázat 3

	A	B	C	D	E
Delta	305	530	250	310	132
Delta 2	305	660	250	310	132
Golf	305	520	250	210	132
Mila	565	1000	535	420	230
Quat	430	390	395	305	190

PL Rys. 3  
 EN Drawing 3  
 DE Abb. 3  
 RU Рис. 3  
 CZ Výkr. č. 3  
 SK Nákr. č. 3  
 IT Disegno .numero 3  
 GR Πίνακας 3  
 FR Dessin 3  
 SI Slika 3  
 LT 3 schema  
 ES Figura 3  
 HU Rajz 3

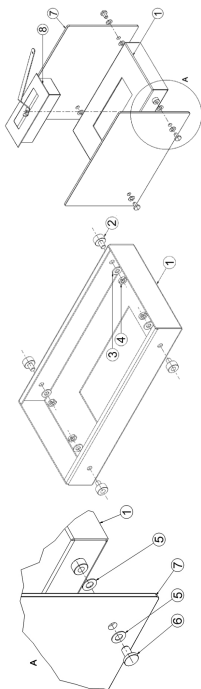


PL Rys. 4  
 EN Drawing 14  
 DE Abb. 4  
 RU Рис. 4  
 CZ Výkr. č. 4  
 SK Nákr. č. 4  
 IT Disegno numero 4  
 GR Πίνακας 4  
 FR Dessin 4  
 SI Slika 4  
 LT 4 schema  
 ES Figura 4  
 HU Rajz 4

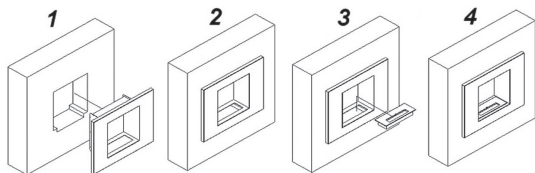


	PL	EN	DE	RU	CZ	SK	IT	GR	FR	SI	LI	ES	HU
Linate (quantity)	Nazwa	Name	Name	Имя	Název	Názov	Nome	Όνομα	Dénomi-nation	Ime	Pavadinimas	Nombre	Név
1.	SKrzynia kompl.	box set	Kasten komplett	Имя	SKříňka kompl.	SKříňka kompl.	scatola set	Κουτί πλήρες	Corps	Ohljuje celotno	Dežė pilna	Caja completa	Burkolat
2.	Wspornik kompl.	bracket set	Stütze komplett	Консоль	Vzpěra kompl.	Vzpera kompl.	suppor-tare set	Στήριγμα πλήρες	Support	Podstavek celotni	Atrama pilna	Sostén completo	Párkány
3.	Pojemnik	container	Behälter	Бюконтей-нер	Jimka	Zásobník	container	Περίκτης	Réservoir	Posoda	Talpa	Recipiente	Tartály
4.	Szyba tylna	back glass	Scheibe hinten	Стекло заднее	Zadní sklo	Zadné sklo	vetro dietro	Ροβέλα πίσω	Vitre arrière	Plošča zadaj	Galinis tarpiklis	Arandela trasera	Hátsó üveg
5.	Szyba	glass	Scheibe	Стекло боковое	Sklo	Sklo	vetro	Ροβέλα	Vitre	Plošča	Tarpiklis	Arandela	Üveg
6.	Sruba	screw	Schraube	Винты	Šroub	Šrutka	vitina	Κοχλός	Vis	Vijak	Varžtas	Tomillo	Csavar
7.	Podkładka	pad	Dich-tungsring	Прокладка	Podložka	Podložka	pad	Δακτύλιος στεγανοποίησης	Cale plate pour vis	Teslini obroč	Sandarínimo žiedas	Anillo Junta	Tömítő-gyűrű
8.	Płyta	plate	Platte	Панель	Deska	Doska	lastra	Έλασμα	Plaque	Plošča	Ploktė	Tablero	Lemez

PL Rys. 5  
 EN Drawing 5  
 DE Abb. 5  
 RU Рис. 5  
 CZ Výkr. č. 5  
 SK Nákr. č. 5  
 IT Disegno .numero 5  
 GR Πίνακας 5  
 FR Dessin 5  
 SI Slika 5  
 LT 5 schema  
 ES Figura 5  
 HU Rajz 5



	Hotel (quantity)	Hotel (quantity)	PL	EN	DE	RU	CZ	SK	IT	GR	FR	SI	LI	ES	HU
1.	1	1	Nazwa	Name	Kasten	Имя основное	Název	Názov	Nome	Όνομα	Dénomination	Ime	Pavadinimas	Nombre	Név
2.	4	8	Dystans	distance	Distanz	основное винт	Název	Názov	Nome	Όνομα	Distance	Ime	Pavadinimas	Nombre	Név
3.	4	8	Podkladka	pad	Dichtungsring	прокладка	Název	Názov	Nome	Όνομα	Cale plate pour vis	Ime	Pavadinimas	Nombre	Név
4.	4	4	Nakrętka	nut	Mutter	гайка	Název	Názov	Nome	Όνομα	Ecrou	Ime	Pavadinimas	Nombre	Név
5.	4	8	Podkladka przezroczysta	transparent pad	Transparentrichter	прокладка	Název	Názov	Nome	Όνομα	Cale plate transparente pour vis	Ime	Pavadinimas	Nombre	Név
6.	4	8	Śruba ozdobna	decorative screw	Zierschraube	фигурный винт	Název	Názov	Nome	Όνομα	Vis décoratif	Ime	Pavadinimas	Nombre	Név
7.	2	2	Szkło	glass	Glas	стекло	Název	Názov	Nome	Όνομα	Vitre	Ime	Pavadinimas	Nombre	Név
8.	1	1	Pojemnik	container	Behälter	биоконтейнер	Název	Názov	Nome	Όνομα	Réservoir	Ime	Pavadinimas	Nombre	Név



PL Montaż biokominka we wnęce ściennej

EN Installation of bio-fireplace in the cavity wall

DE Einbau des Biokamins in die Wandnische

RU Монтаж биокамина в стенной нише

CZ Montáž biokrbu do dutiny ve stěně

SK Montáž biokozubu vo výklenku v stene

IT nstallazione di parete della nicchia biocaminetto

GR Τοποθέτηση του βιολογικού τζακιού σε εσοχή τοίχου

FR L'installation de la bio-cheminée dans une niche murale

SI Vgradnja bio-kamina v stensko odprtino

LT Biožidinio montavimas į sienos nišą

ES Montaje de la biochimenea en el nicho de pared

HU Bio kandalló beszerelése az üreges falba

