



SPACE TOWER

The ultimate solution for larder units

www.blum.com

 **blum**[®]



➤ Watch video on
SPACE TOWER
[www.blum.com/
trailerspacetower](http://www.blum.com/trailerspacetower)

More space in the kitchen

SPACE TOWER can be accessed with impressive ease, provides ample space for provisions and can be tailored to each customer's individual needs, meaning this well-designed larder unit provides optimum support for everyday kitchen use.

 **blum**



Contents

- 4** For flexible access
- 6** For flexible storage
- 8** For flexible design
- 10** With all box systems
- 12** In every living area
- 14** For flexible design
- 16** DYNAMIC SPACE
- 18** Blum



Ideas from Blum
for practical kitchens

Workflow – Convenience

It is important that people are able to access their provisions when using their kitchen, which is why SPACE TOWER needs to be located in an easy to reach position in the room, enabling good workflows.

For flexible access

Larder units are used more frequently than you would think. This is why they really need to be convenient to use. Thanks to the SPACE TOWER's pull-outs that can be opened individually, provisions can be stored in this practical cabinet solution in an organised fashion and then accessed easily.



Access from three sides

SPACE TOWER makes use of the full depth of your cabinet. Thanks to full extension, even those provisions stored in the furthest corner of a pull-out are easy to access from the left, right and even the front.

Removal from above

Each full extension can be opened individually and is fully visible from above, meaning you can quickly find the item you need and then remove it from above with ease.

Light operating forces

You only have to open the one pull-out that contains the item you need. The light operating forces make the larder unit incredibly convenient to use.

For flexible storage

Ample storage space is the main priority with SPACE TOWER. This clever cabinet solution therefore makes the best possible use of the space available, with the option of storing and clearly arranging provisions in the pull-out.

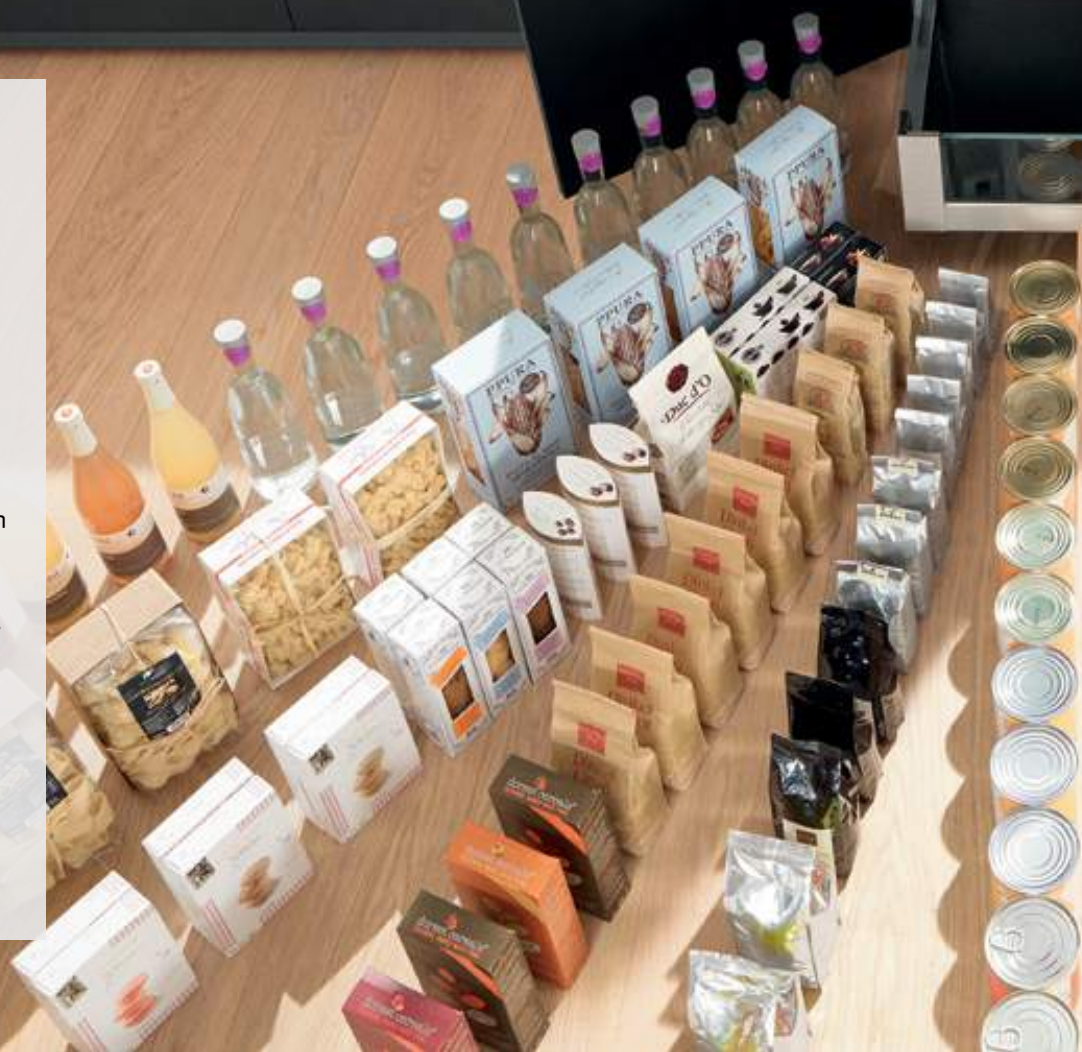
blum®



Ideas from Blum
for practical kitchens

Space – Optimisation

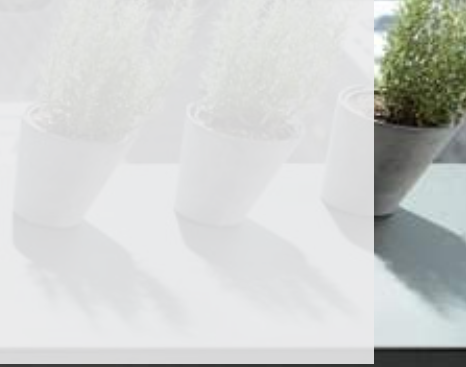
SPACE TOWER enables you to store a large number of items and make best use of the space available in your kitchen. You can even use practical inner dividing systems to make sure that your provisions are clearly and flexibly organised.





High, closed drawer boxes

High, closed drawer boxes ensure that provisions are stored securely, meaning that nothing can fall out from the side or the back.



Flexible interior organisation

Inner dividing systems allow you to arrange your storage space optimally, ensuring better organisation and visibility. Plus, you can store provisions such as flour, sugar and rice without the risk of them tipping over.



High load bearing capacity

Each and every pull-out boasts an impressive level of stability and high load bearing capacity, up to a total weight of 70 kg, ensuring that even heavy items, such as bottles, are stored securely.

For flexible design

SPACE TOWER is flexible in height, width and depth and can also be adjusted to your individual storage space requirements. The wide range of planning options means that this practical larder unit makes use of every single millimetre in your kitchen.

blum®



Ideas from Blum
for practical kitchens

Motion – Quality

Quality of motion is an important factor in making your kitchen easy to use on a day-to-day basis. It is possible to adapt SPACE TOWER to your specific needs by fitting it with an electrical or mechanical motion support system.



Narrow version

SPACE TOWER is the ideal solution for smaller kitchens too, as a large number of provisions can be stored, even with a small cabinet width.



Wide version

If you have more space available in your kitchen for SPACE TOWER, there is more than enough room inside to store all the provisions a large family needs.



High ease of use

Pull-outs open automatically with the SERVO-DRIVE electrical motion support system – a light touch is all that is required. BLUMOTION ensures silent and effortless closing.

With all box systems

SPACE TOWER offers a high level of design freedom. There are two box systems available with a wide range of design variants – LEGRABOX and TANDEMBOX. If the customer wishes, the design of the entire kitchen can be made consistent.

 blum®





With LEGRABOX free, you have a choice of large design elements, which create individual styles. Design elements made from clear glass are practical and give you an even better view of your provisions.



The colour and material of all the LEGRABOX pure components are perfectly coordinated with one another.



With TANDEMBOX, you can choose from the various programme lines, such as TANDEMBOX antaro with gallery and design elements made from glass.



In every living area

This practical solution for the kitchen is also suited to other living areas. The ample storage space and convenient access offered by SPACE TOWER make this the ideal solution for the bedroom, hall or bathroom, too.

blum






Having a SPACE TOWER in your hall allows you to store coats and accessories tidily. The picture above shows a solution with TANDEMBOX antaro in anti-fingerprint stainless steel.



You can also organise cosmetics in your bathroom so they are always close at hand – this picture shows LEGRABOX pure in silk white matt.



In high cabinets, a practical shelf is the highest level and therefore clearly visible from the front. The inner drawer underneath makes it easier to access stored items from the side.

The option to position the pull-outs at different heights within the cabinet guarantees that no items will be too tall to be stored inside.

If the hinges are mounted above the pull-outs, the lowest pull-out can be inserted right at the bottom, turning even those last few centimetres into usable storage space.

For flexible design

To ensure that every single SPACE TOWER has the wow factor, there are already some handy design tips available for when you are planning your practical solution. Pull-outs that fit flexibly into the cabinet and can be individually adapted to suit different stored items offer additional design options.

 **blum**



It is easy to work out the fittings and drilling positions you need using the online product configurator – just head to:

➤ www.blum.com/configurator

For planning information, please visit:

➤ www.blum.com/spacetower

Ideas from Blum for practical kitchens

Kitchens are normally put to intensive use and have to withstand the rigours of the daily routine. Blum has been investigating the needs of kitchen users for years and has come up with a multitude of ideas to make modern kitchens even more practical.

blum®



For more information about practical kitchens

➤ <http://www.blum.com/ideas>



Ideas from Blum for practical kitchens

Workflow – Convenience

The work you do in the kitchen usually consists of recurring actions or movements, which is why everything needs to be stored where it will be used. This will make sure that your work in the kitchen runs like clockwork.



Space – Optimisation

You can never have enough storage space. However, the exact amount of space you personally require will depend on your specific needs. With careful planning, you will be able to make the best possible use of the space available to you.



Motion – Quality

Top-quality fittings ensure a noticeable increase in the quality of motion in everyday kitchen use. Practical furniture should be easy to open, feature an impressively smooth running action even when fully loaded and close silently and effortlessly thanks to BLUMOTION.



Blum

Founded over 60 years ago by Julius Blum, today Blum is an internationally active family-owned company. Its strategic business segments include hinge, pull-out and lift systems. All our product developments focus on perfecting motion.

www.blum.com





Blum in Austria and around the world

The company has seven plants in Vorarlberg, Austria, additional production sites in Poland, the USA and Brazil and 27 subsidiaries/representative offices. Blum supplies more than 120 markets. The Blum Group employs 6.400 people in total, 4.800 of whom work in Vorarlberg.



Global customer benefits

"Whether manufacturer, distributor, fitter or kitchen user – everybody should personally enjoy the benefits of Blum products" – that is Blum's philosophy on global customer benefits.



Innovations

To support customers with innovative fittings solutions and secure long-term success for the company, we need to consistently invest in research and development, in plants and facilities and in employee training. With more than 1200 registered trademarks around the world, Blum is one of Austria's most innovative companies.



Quality

At Blum, the comprehensive concept of quality does not only apply to products. Services and our cooperation with customers and partners should also meet the same quality requirements.



Environment

At Blum, we believe that responsible ecological behaviour has long-term economic benefits. The longevity of products is just one of many important aspects. Other important measures include the use of environmentally friendly processes, the intelligent use of materials and prudent energy management.



DYNAMIC SPACE

Good workflows, optimum use of storage space and high quality of motion are important features of a practical kitchen. Blum's ideas for practical kitchens are designed to bring function, convenience and ergonomics to furniture interiors.



Julius Blum GmbH
Furniture Fittings Mfg.
6973 Höchst, Austria
Tel.: +43 5578 705-0
Fax: +43 5578 705-44
E-mail: info@blum.com
www.blum.com

