

## LAMP. SOFT CLOSE BI-FOLDING HINGE HG-JC70

Latest  
Info

Passed Private 40K Cycle Test

Soft-close



- Centre hinge for folding doors. When closing, the damper force allows for slow closing.
- The door closing speed can be adjusted with a hex key.
- **The pull-in function gently retracts the door until it is completely closed.**

**Applications**

- Interior folding doors

**Parts Included**

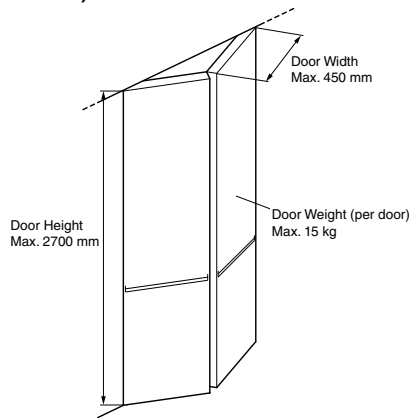
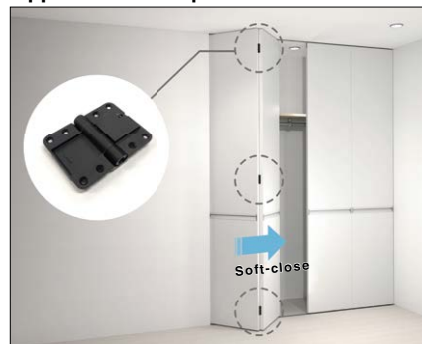
- Countersunk tapping screws 3.5 x 20

**Remarks**

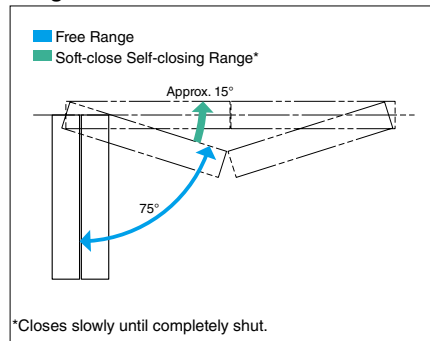
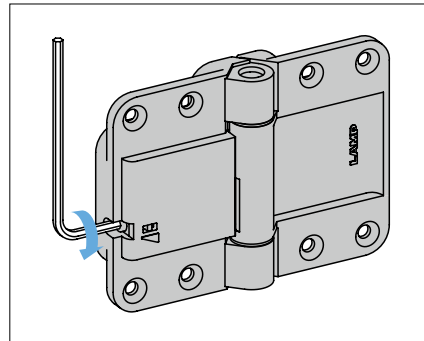
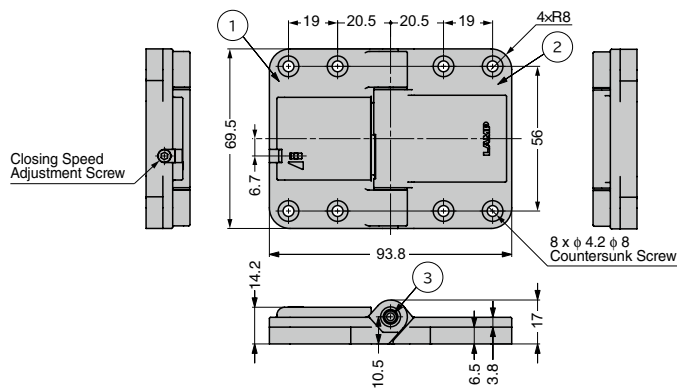
- Adjust the closing speed of the door after removing the hinges from the door. For adjustments with the hinges still attached, refer to the machining diagram below.
- This product is recommended for use with top-hung folding doors. For use with pivot-type folding doors, please verify compatibility independently before proceeding.

GOOD DESIGN AWARD 2024  
**BEST 100**

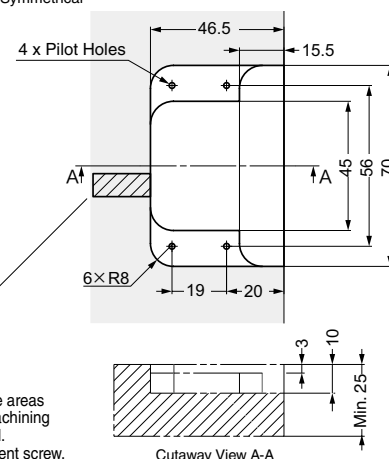
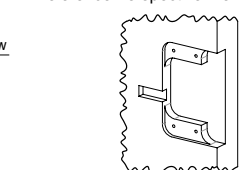
KIDS DESIGN AWARD 2024

**Conditions for Using One Set of Folding Doors (Two Doors)****Application Example**

3 hinges per set of folding doors (2 doors).

**Range of Motion****Door Closing Speed Adjustment****Installed Hinge****Cut Out Dimensions** \*Symmetrical

No.	Part Name	Material	Finish/Colour
①	Body A	Polyamide (PA)	Black
②	Body B		
③	Axis	Steel (SWCH)	Nickel Plating

**Reference Perspective View**

RoHS	CAD	Item Code	Item Name	Colour	Door Width	Door Height	Door Weight kg/3 pcs	Weight (g)	Box (pcs)	Carton (pcs)
●	2D/3D	250-056-741	HG-JC70-BL	Black	Max. 450	Max. 2700	Max. 15	102	12	72